

A stylized fish logo composed of a blue body and a light green tail. The fish is facing right. The text is centered over the blue body of the fish.

**Lancement du site internet:
www.truites-autochtones.org**

Résultats des premières données carnets de pêche saison 2004

Quelques chiffres...

50 carnets rendus

1 285 têtes de truites récoltées

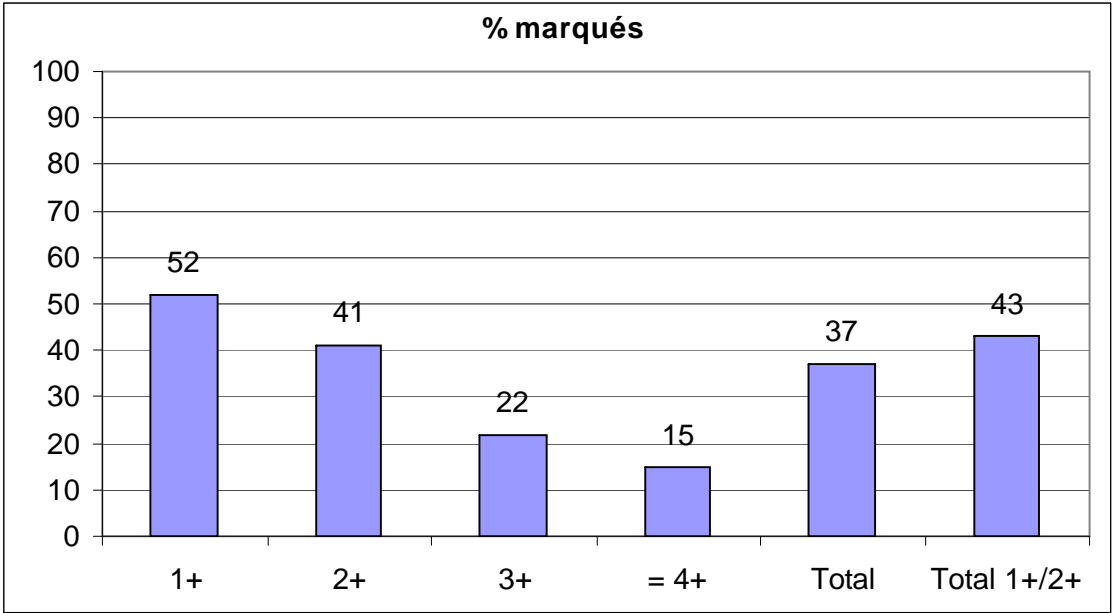
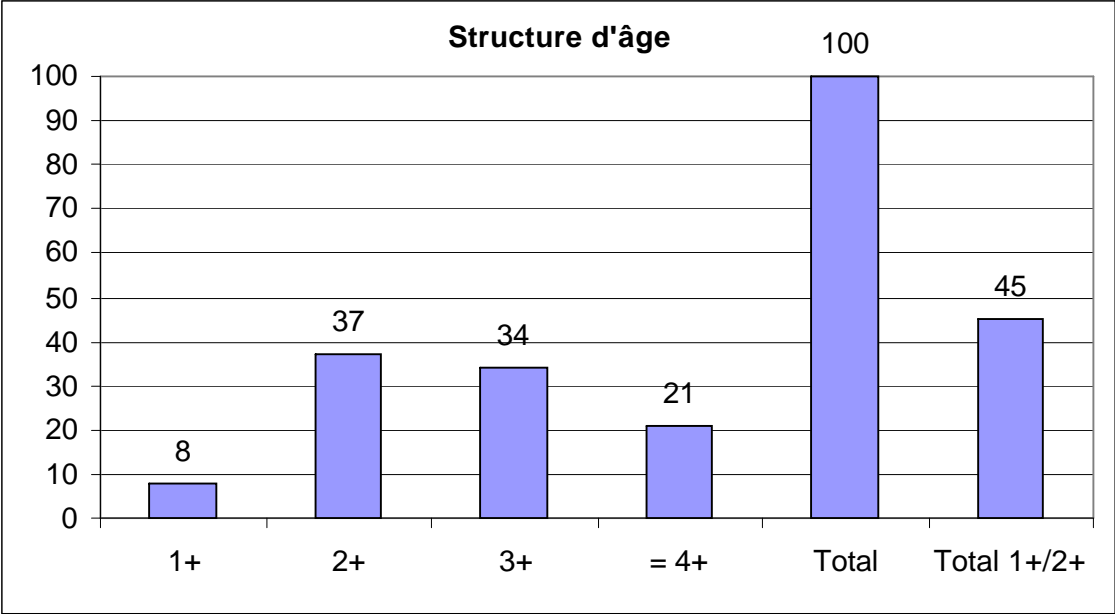
1 274 poissons analysables



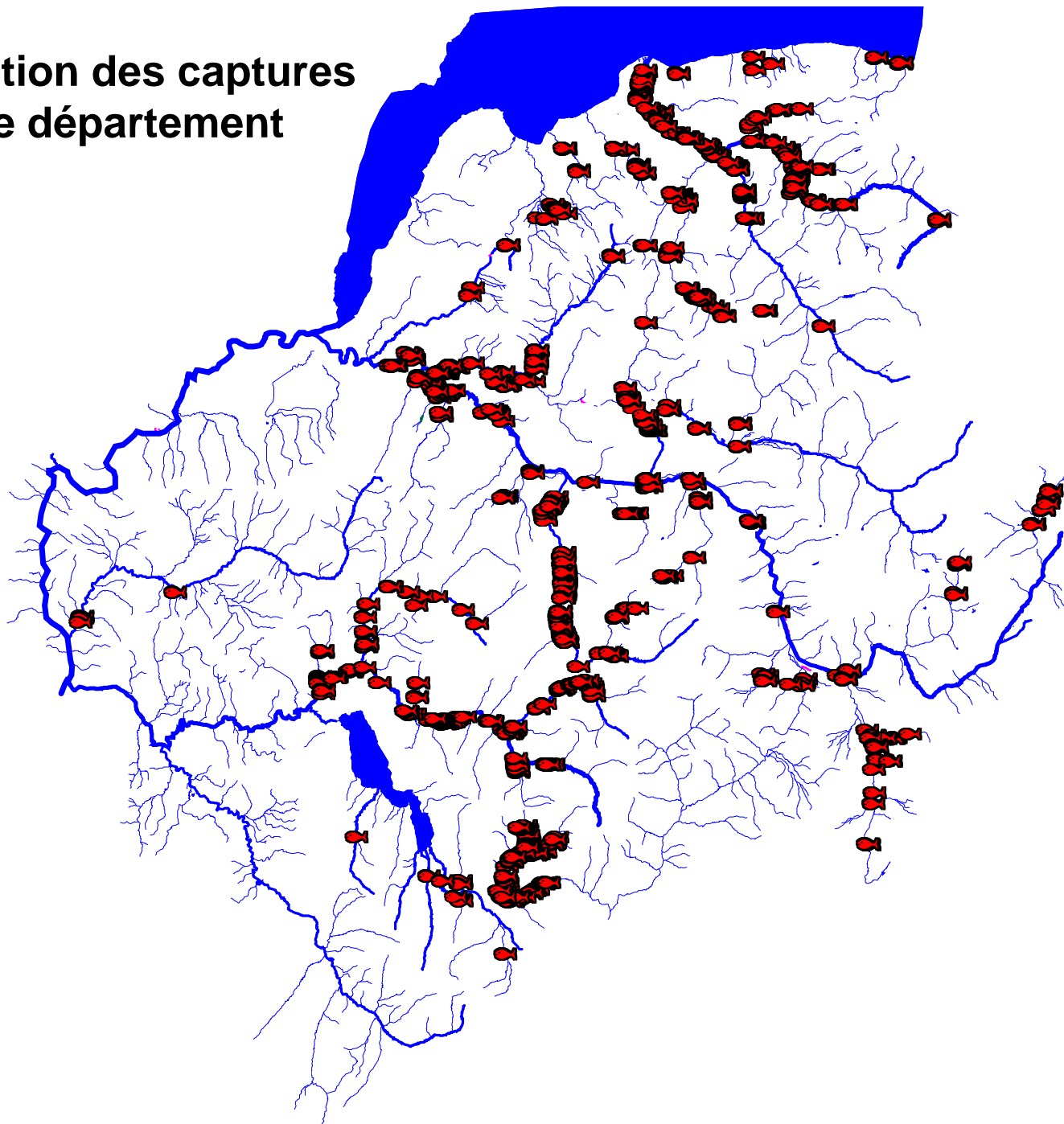
0,8% de perte

<u>Année marquage</u>		<u>Saison 2004</u>		<u>Saison 2005</u>		<u>Saison 2006</u>	
2002	0+	→	2+	→	3+	→	4+
2003	0+	→	1+	→	2+	→	3+
2004	0+	→	0+	→	1+	→	2+
			45%		79%		88%

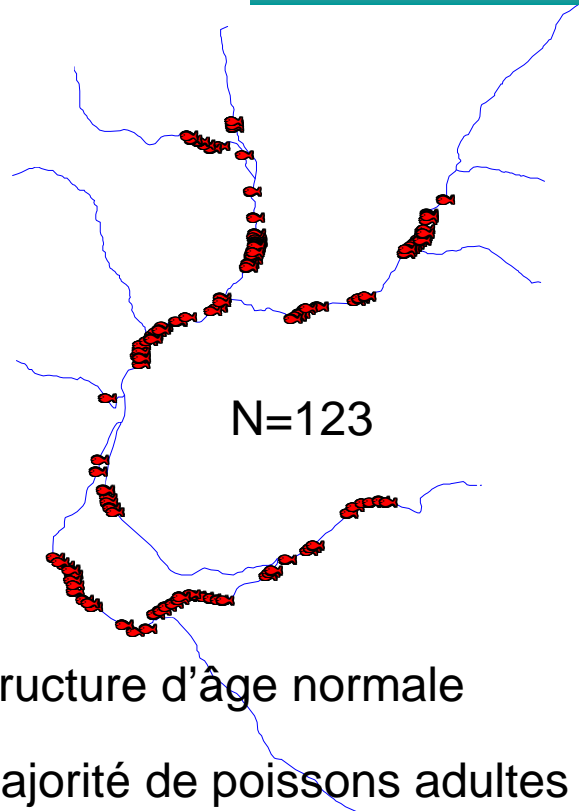
Ensemble du département



Localisation des captures sur le département

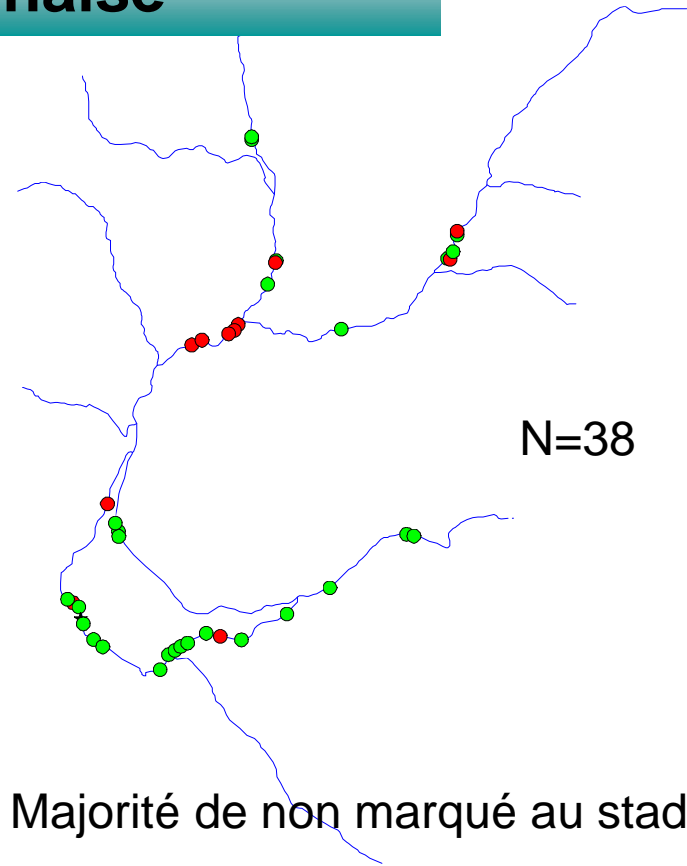


Bassin de la Chaise

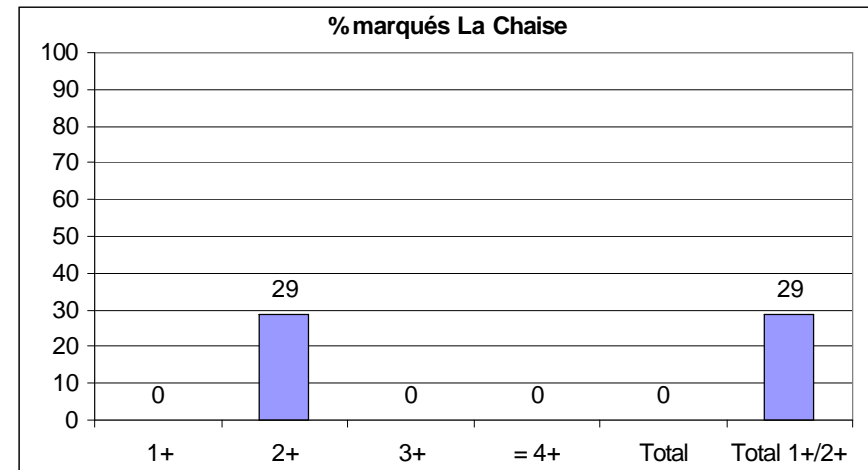
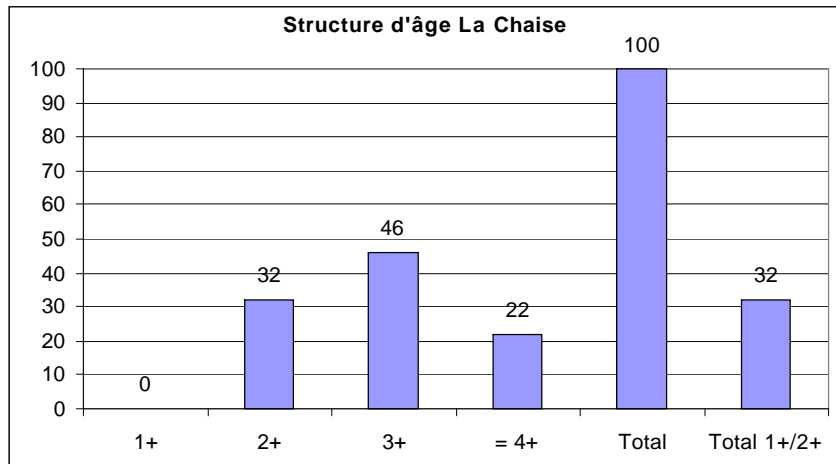


Structure d'âge normale

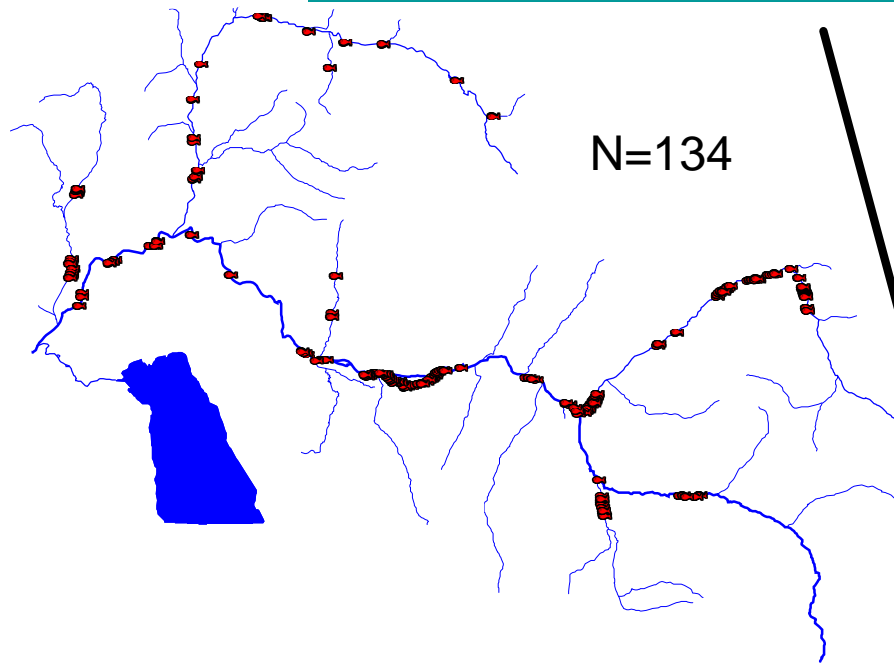
Majorité de poissons adultes



Majorité de non marqué au stade 2+

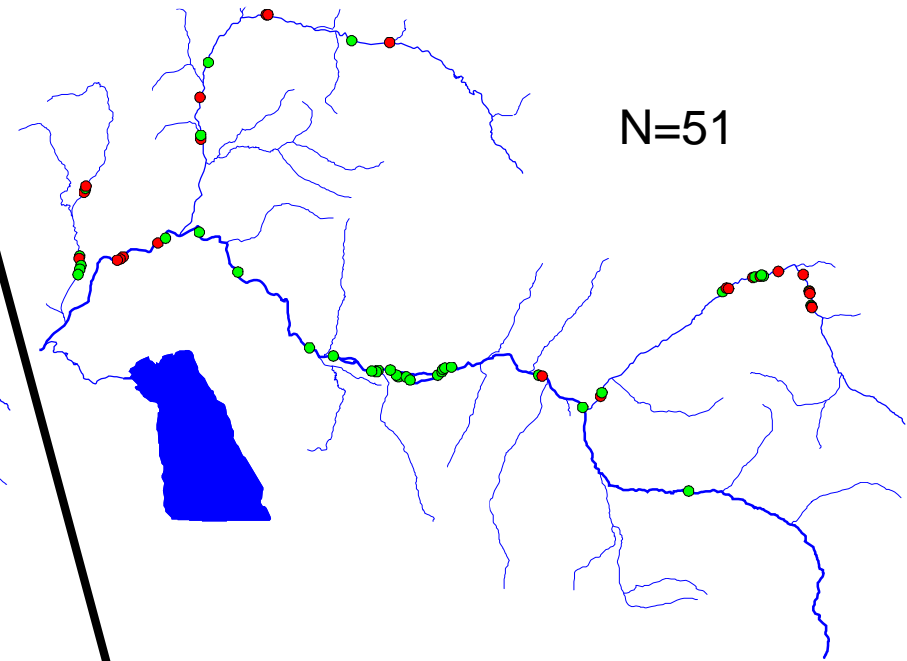


Le Fier



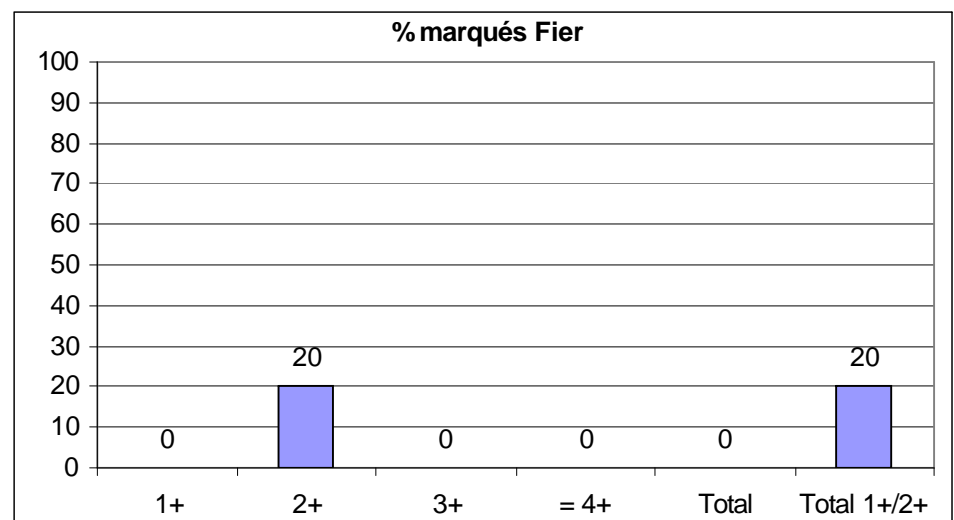
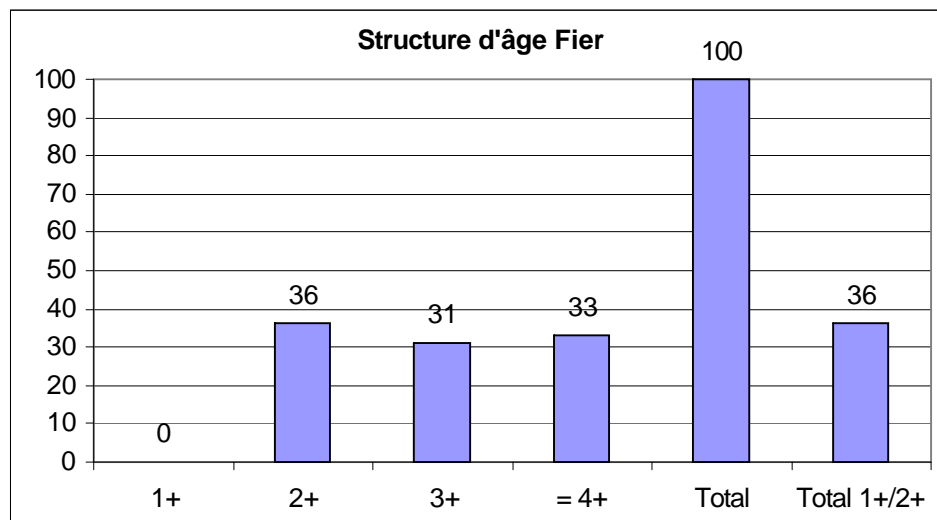
N=134

Majorité de poissons adultes

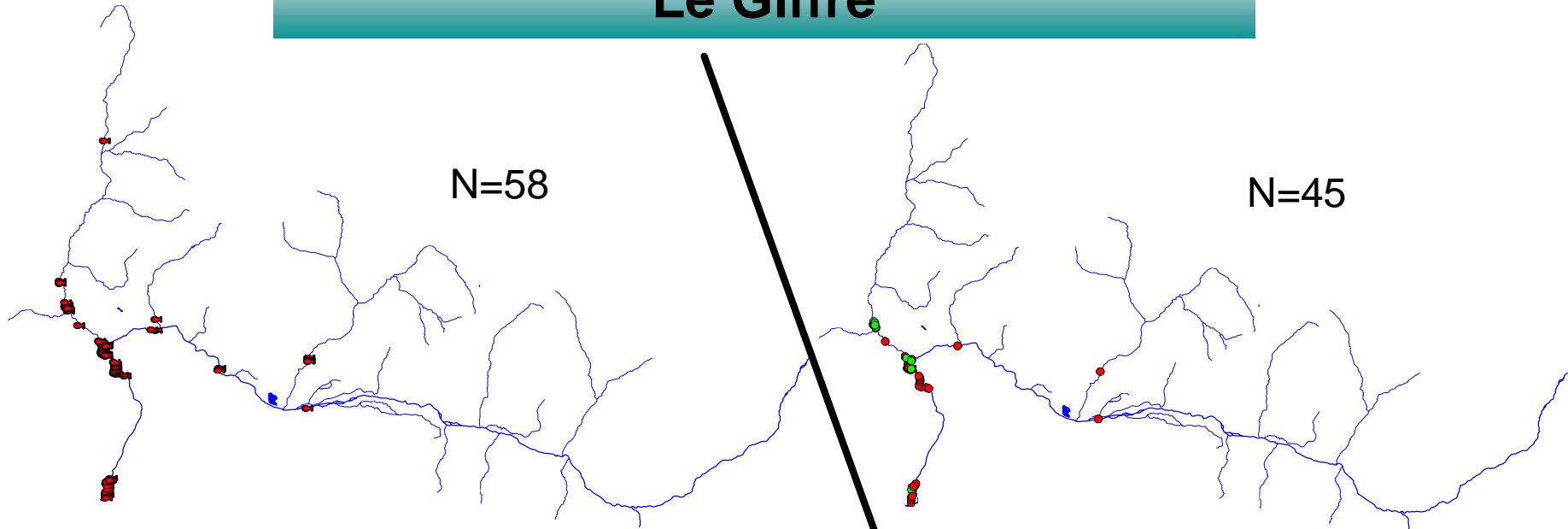


N=51

Majorité de non marqué au stade 2+



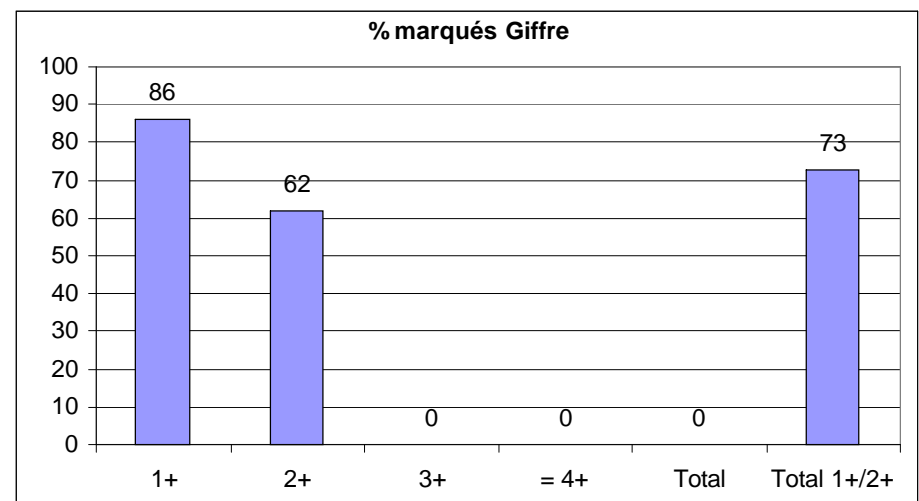
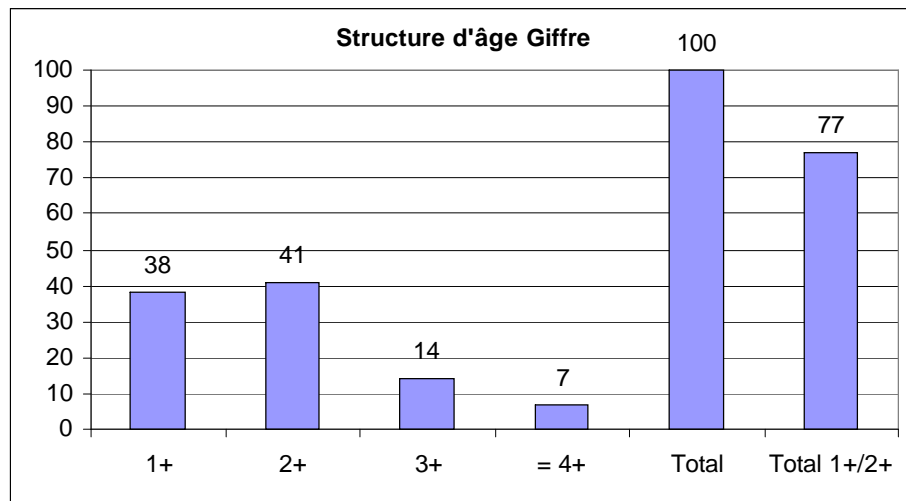
Le Giffre



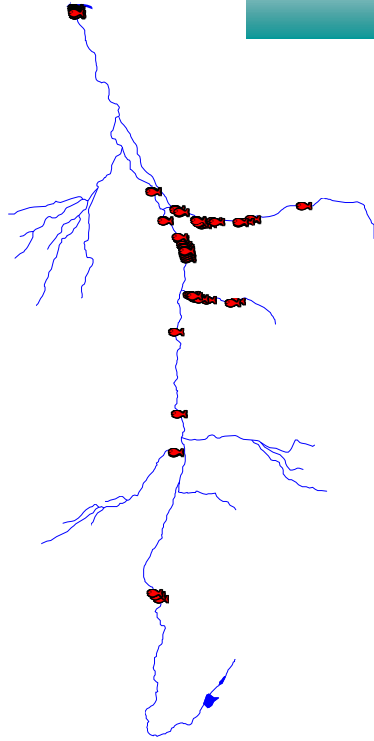
Structure d'âge anormale

Majorité de juvéniles

Majorité de marqués aux stades
1+ et 2+

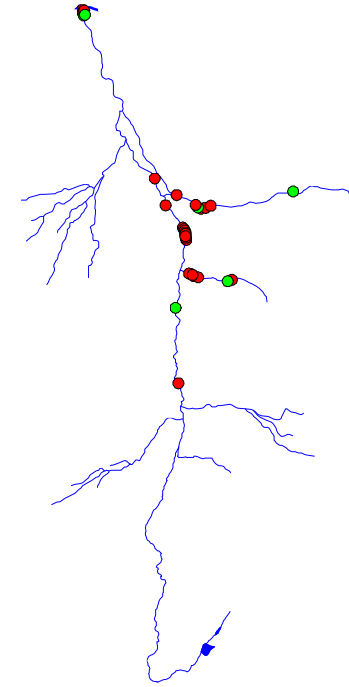
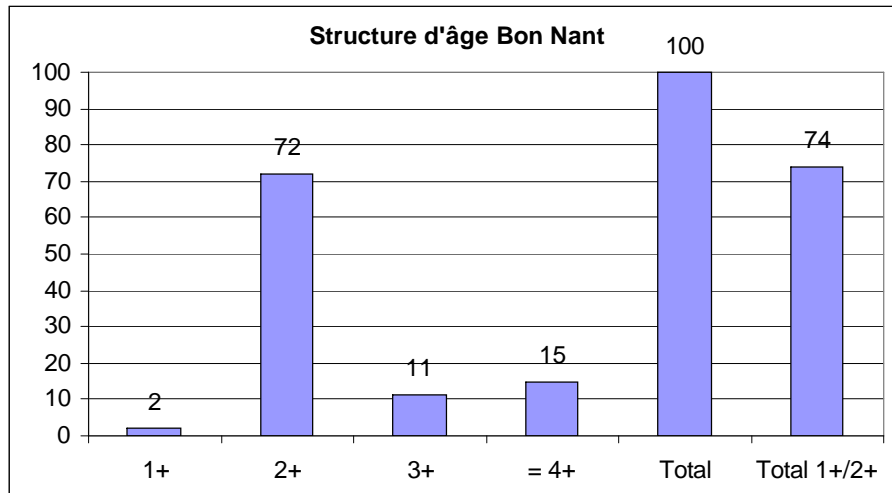


Le Bon nant



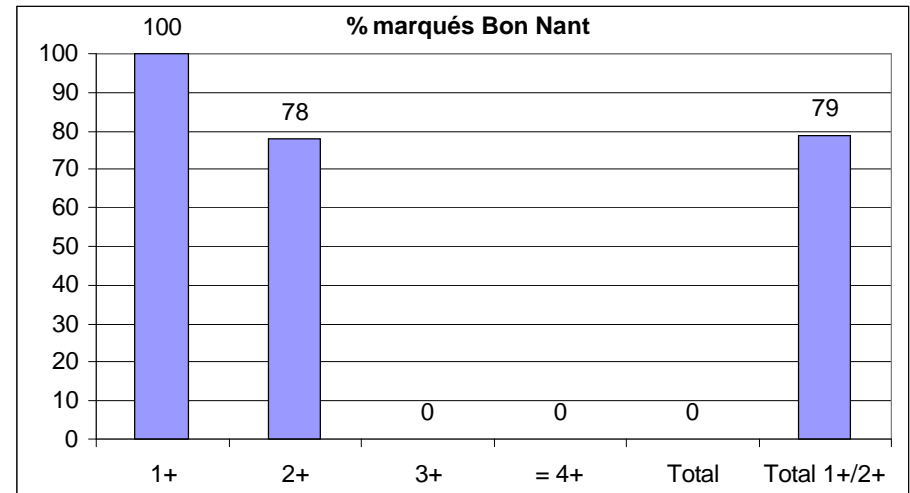
N=46

Structure anormale /
Majorité de juvéniles

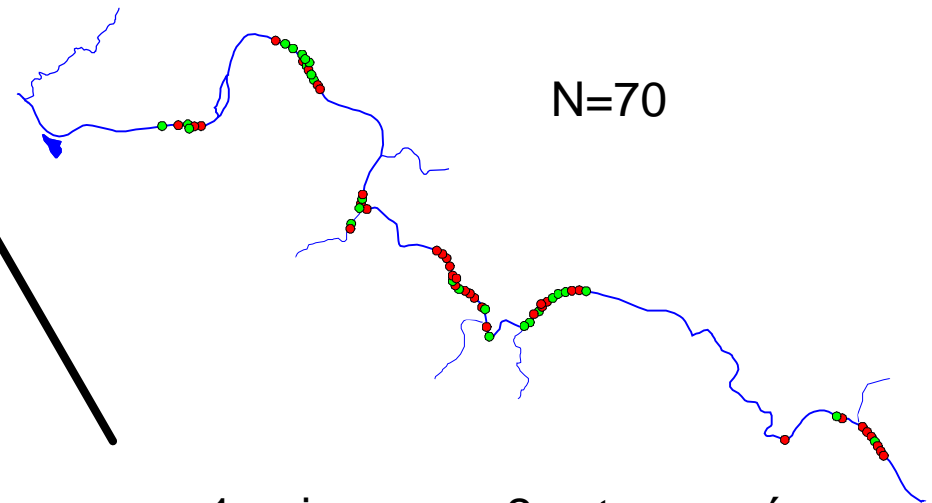
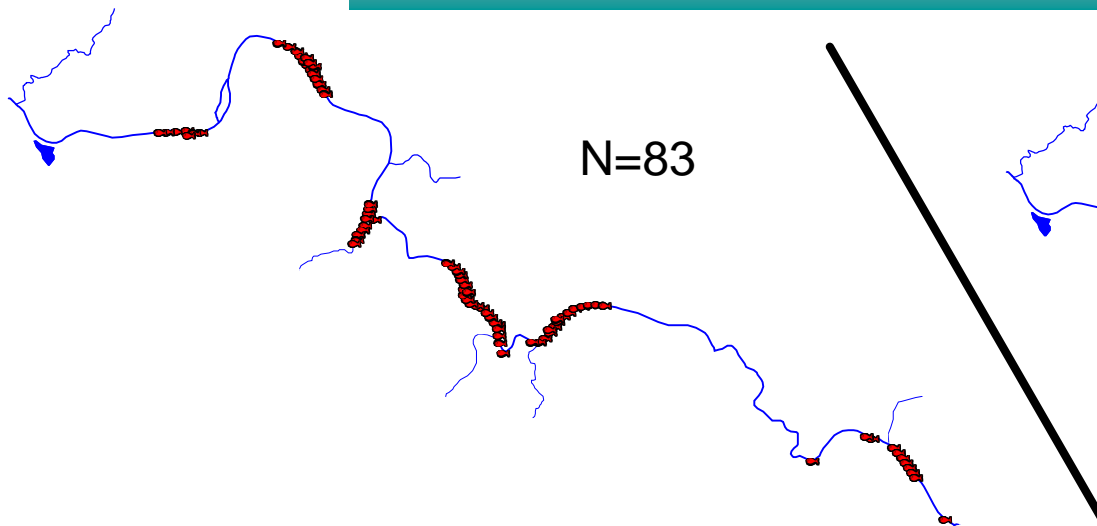


N=33

Majorité de marqués (surdensitaires)



L'Arve

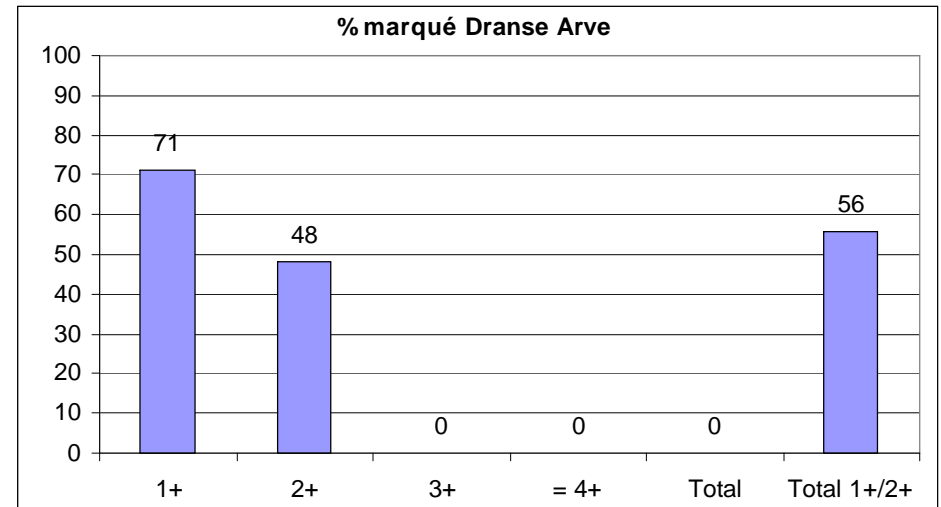
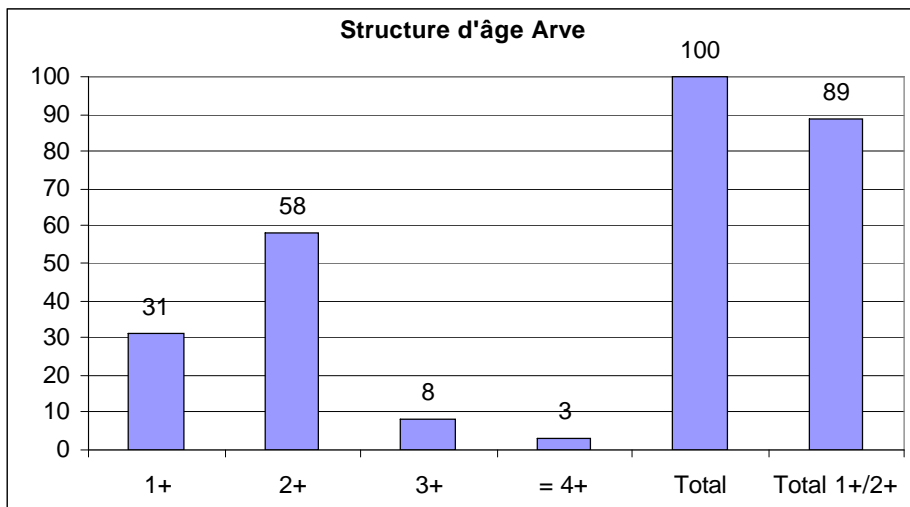


Structure d'âge anormale pour ce type de rivière

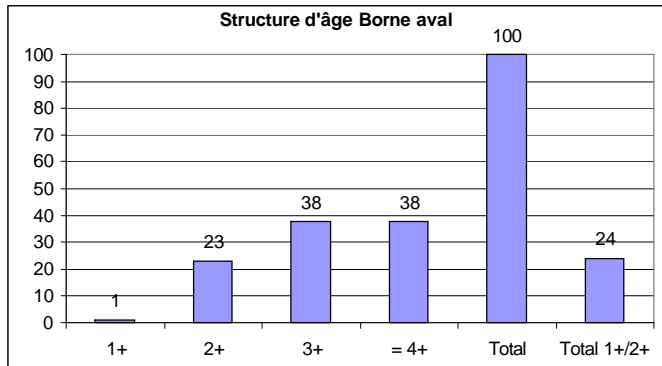
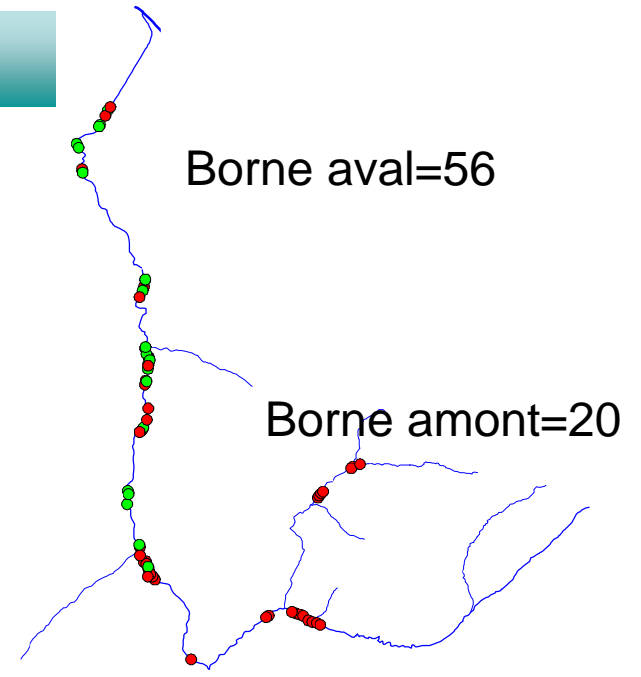
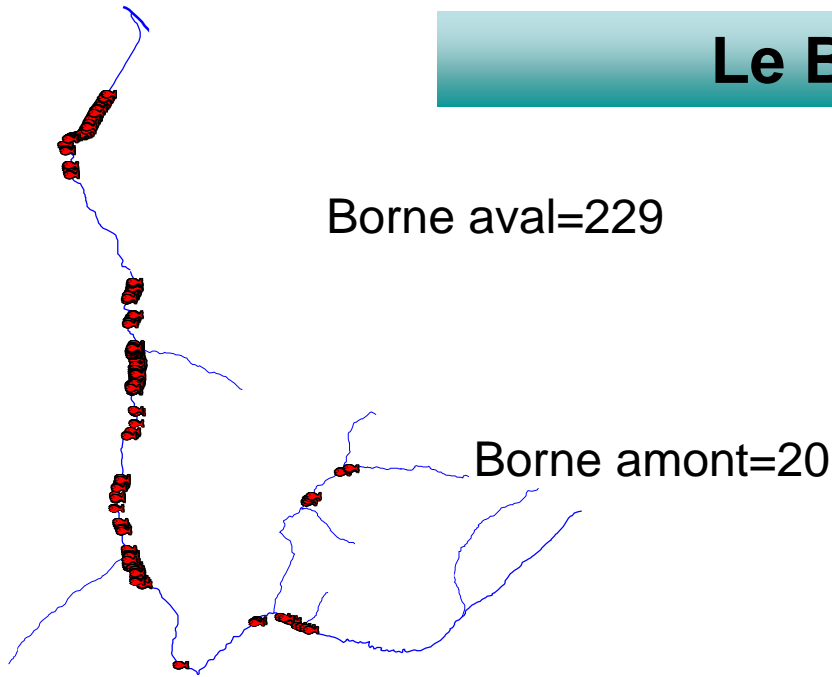
Très forte majorité de juvéniles

1 poisson sur 2 est marqué

Pas de population naturelle, situation inquiétante

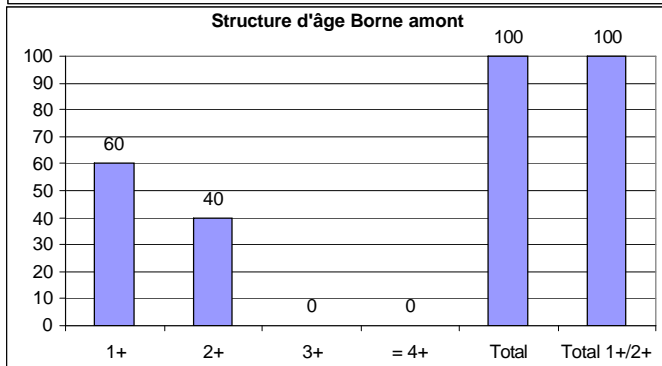
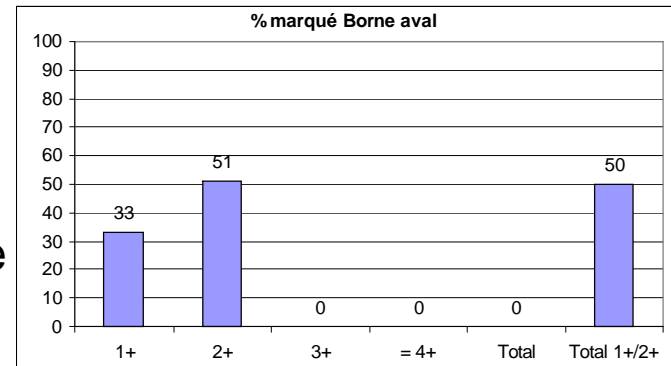


Le Borne



Structure normale et majorité d'adultes

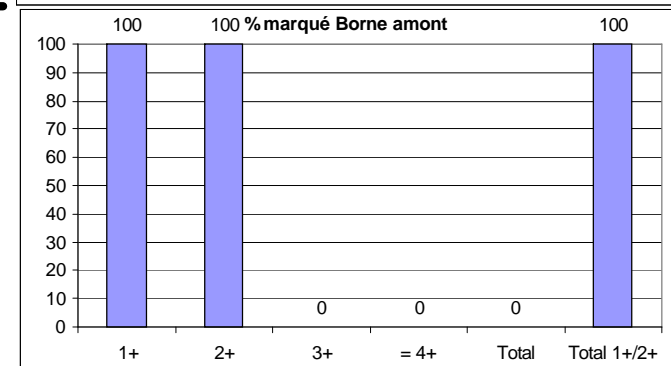
1* / 2 au stade juvénile



Captures uniquement de juvéniles

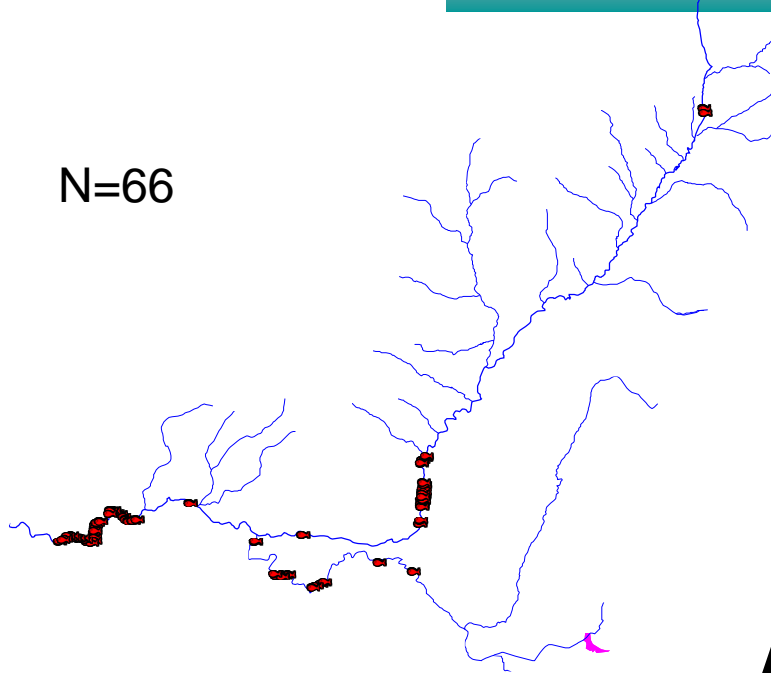
Tous marqués

Situation dramatique



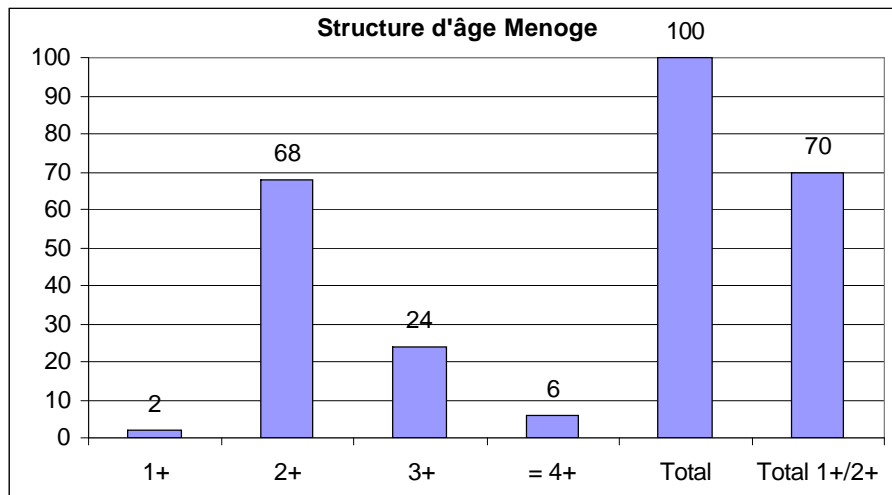
La Menoge

N=66

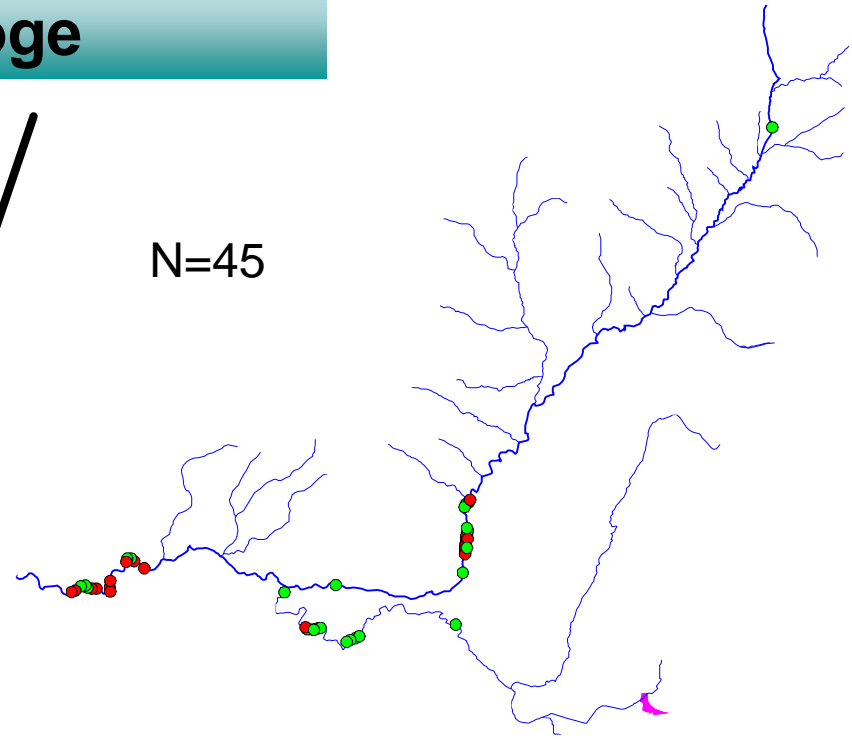


Structure dominée par 2+

Majorité de juvéniles

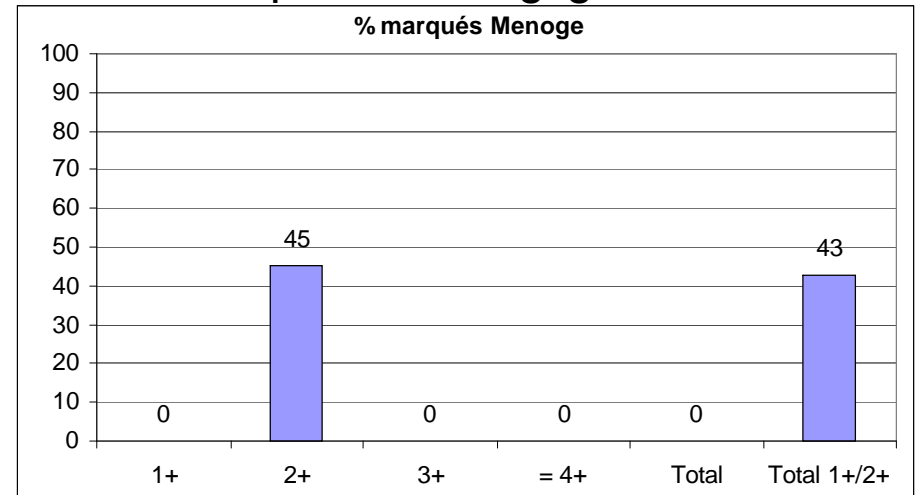


N=45



Majorité de non marqués

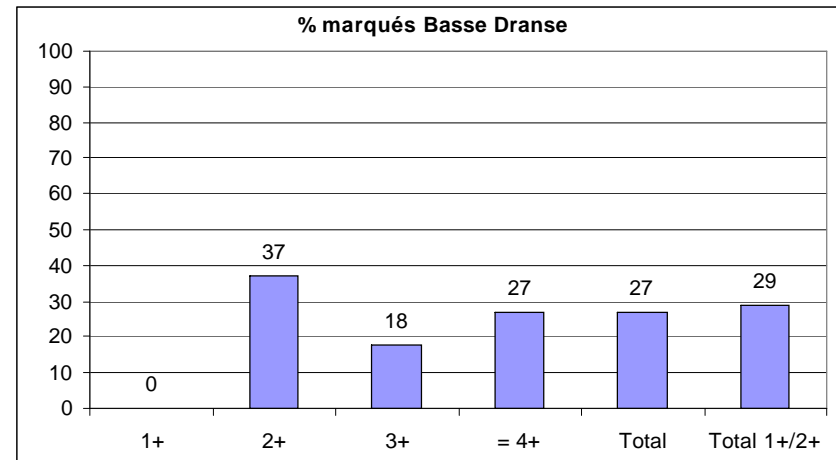
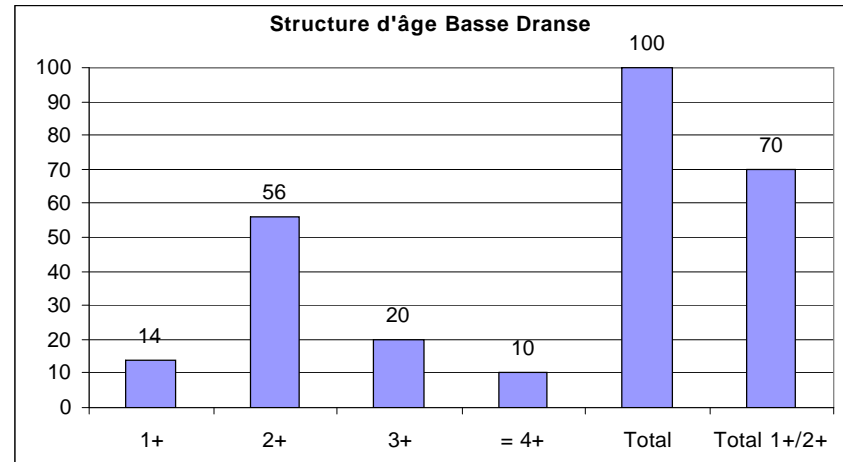
Marqués non négligeable



La Basse Dranse

Structure dominée par 2+
Majorité de juvéniles

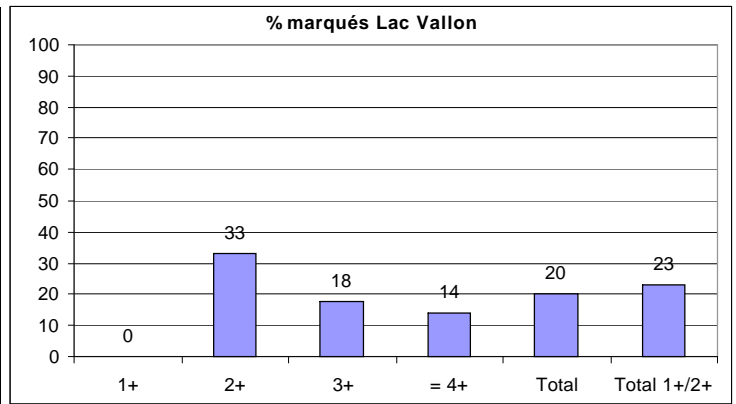
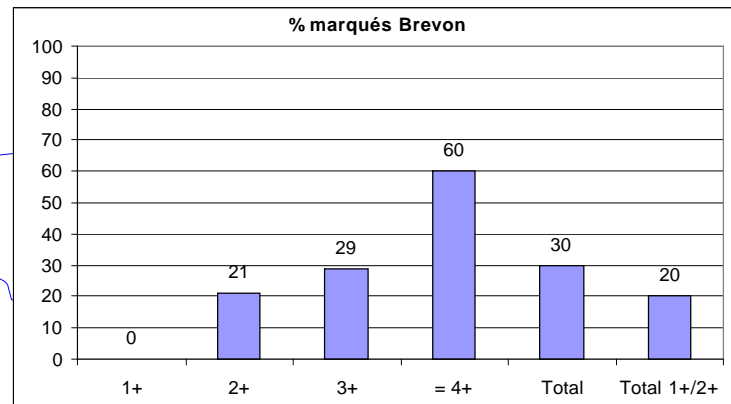
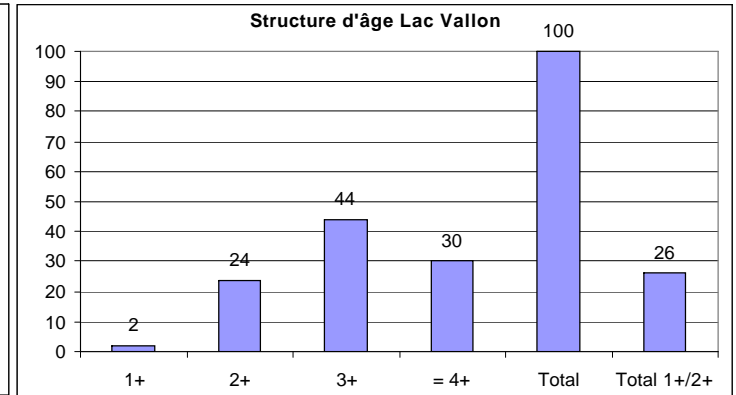
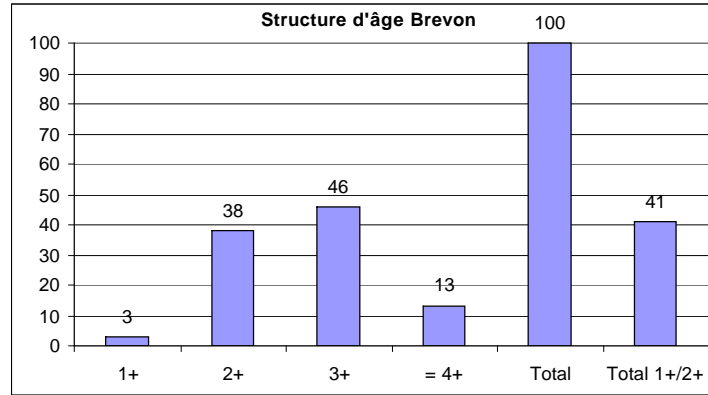
N=112



Majorité de non marqués

Le Brevon

N=37



N=50

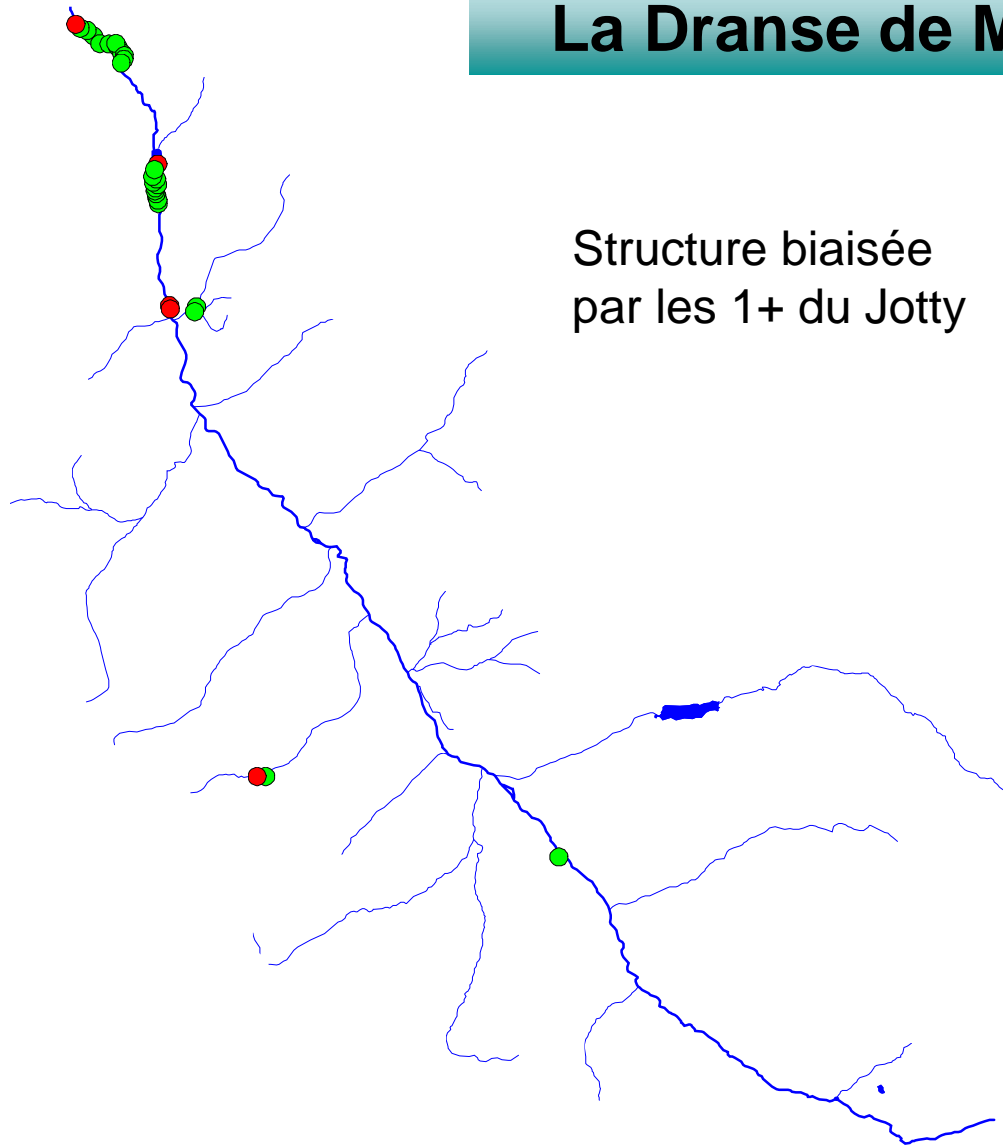
Structure d'âge normale

Majorité d'adultes

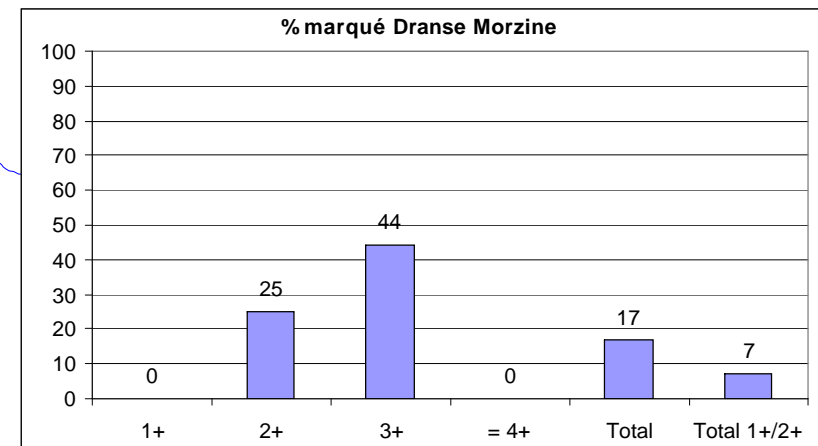
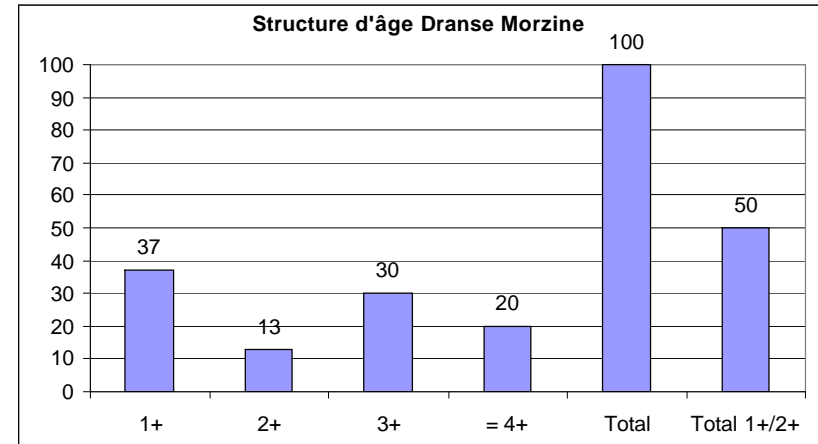
Majorité de non marqués

Plus de marqués aux âges supérieurs

La Dranse de Morzine



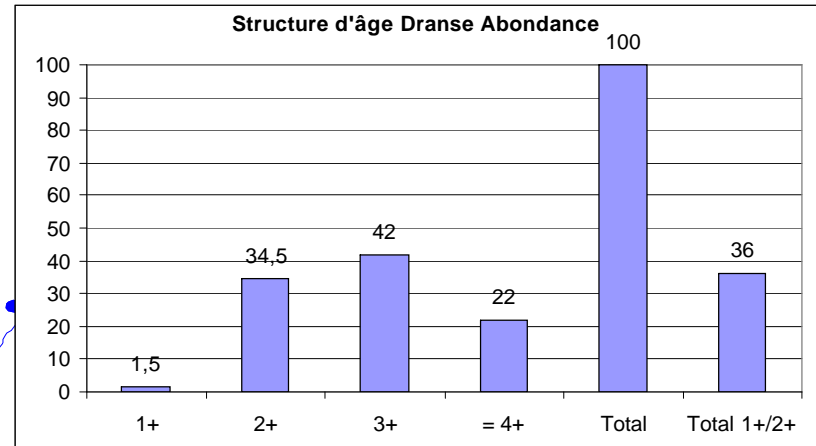
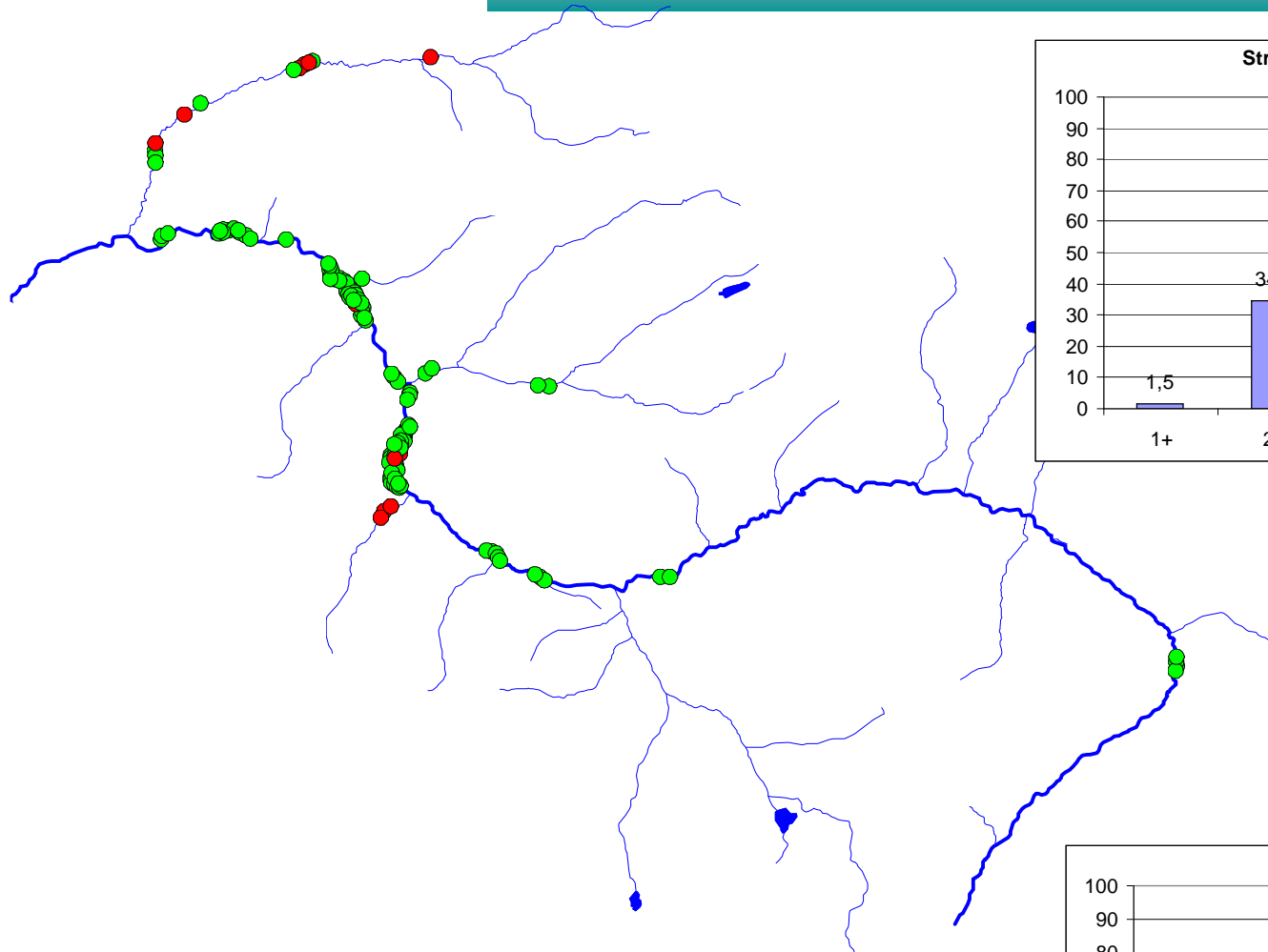
Structure biaisée
par les 1+ du Jotty



Majorité de non marqués

Plus de marqués aux
âges supérieurs

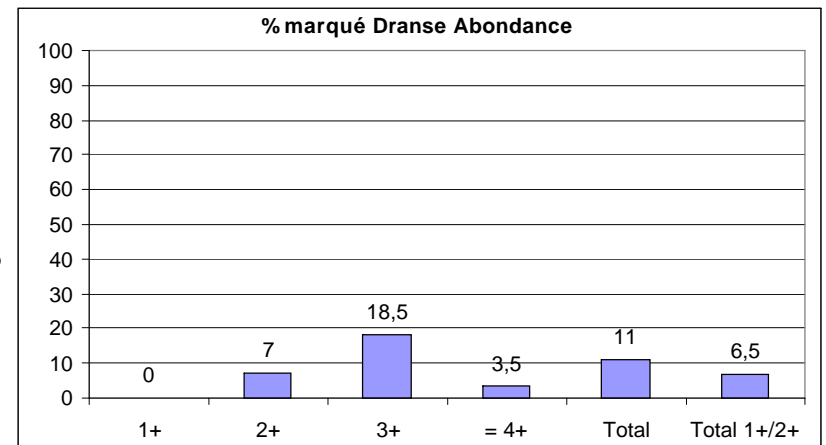
La Dranse d'Abondance



Structure d'âge normale

Majorité d'adultes

Forte majorité de non marqués



Synthèse

4 cas différents = 4 situations différentes

Captures **uniquement** de juvéniles et **uniquement** des marqués (Borne amont)

Situation dramatique mais réversible, gestion piscicole à repenser

Captures (trop) **importantes** de juvéniles et **majorité** de marqués (Arve, Giffre, Bon Nant)

Situation inquiétante car l'alevinage cache la faiblesse de la population naturelle, gestion actuelle permet de maintenir les captures mais non durable

Captures (trop) **importantes** de juvéniles et **minorité** de marqués (Menoge, Basse Dranse)

Situation améliorable dans le temps en modifiant les pratiques (Menoge) et la réglementation (Menoge, Basse Dranse)

Captures **minoritaires** de juvéniles et **faible** de marqués (Borne, Brevon, Chaise, Dranses Abondance et Morzine, Fier et affl.)

Situation idéale, traduit une population naturelle en place, gérer le patrimoine existant

